

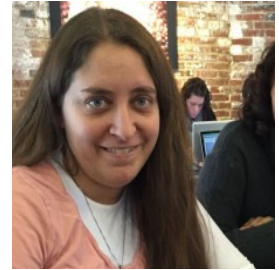
Press Release

Jewish Genealogical Society of the Conejo Valley and Ventura County* (JGSCV) (*and surrounding areas)

The Jewish Genealogical Society of the Conejo Valley and Ventura County (JGSCV) will hold a general meeting, co-sponsored with Temple Adat Elohim on Sunday, March 3, 2019 at Temple Adat Elohim 2420 E. Hillcrest Drive, Thousand Oaks, 91362
1:30-3:30 p.m.



The Program: Success In-And In Spite of Endogamy



Genetic genealogy is particularly daunting for those whose forebears come from endogamous populations (such as Ashkenazi Jews, Native Hawaiians and Cajuns, who have married in a closed group for generations). The work of identifying actual relatives from the mass of genetic distantly-related family can be frustrating. Drawing on case studies, this lecture explains how you can have success in such a situation. For Lara Diamond, this work has led to reunification with many relatives, including a family branch thought to have been killed in the Holocaust.

Speaker: Lara Diamond has been researching her family for 25 years, starting as a middle school student. She has traced all branches of her family multiple generations back in Europe using Russian Empire-era and Austria-Hungarian Empire records. Most of her research is in modern-day Ukraine, with a smattering of Belarus and Poland. As she is an Ashkenazic Jew, she gets to have particular fun with her completely endogamous genome. She is president of the Jewish Genealogy Society of Maryland, leads JewishGen's Subcarpathian SIG, and is on JewishGen's Ukraine SIG's board of directors. She also runs multiple district- and town-focused projects to collect documentation to assist all those researching ancestors from common towns. She blogs about DNA and her Eastern European research at <http://larasgenealogy.blogspot.com>.

The Jewish Genealogical Society of the Conejo Valley and Ventura County is dedicated to sharing genealogical information, techniques and research tools with anyone interested in Jewish genealogy and family history.

There is no charge to attend the meeting. Anyone may join JGSCV. Annual dues are \$25 for an individual and \$30 for a family.

For more information contact: information@JGSCV.org or call Jan Meisels Allen@ 818-889-6616 See; www.JGSCV.org